



G S M P

GOBINDAPUR SEPHALI MEMORIAL POLYTECHNIC

A Unit of Gobindapur Sephali Samaj Seba Samity

Approved by AICTE & Affiliated to WBSCT & VE & SD
(An ISO 9001:2008 Certified Institute)



gsmpolytech@rediffmail.com



www.gsmp.co.in

PROSPECTUS CUM INFORMATION BROCHURE



 **(+91) 8373076097/ 8373076099/ 9732692824** 

VILL- GOBINDAPUR (NEAR GUSKARA), PO- KELETI, PS- AUSGRAM, DIST- PURBA BARDHAMAN, WB-713128

GOBINDAPUR SEPHALI MEMORIAL POLYTECHNIC

Approved by AICTE & Affiliated to WBSCT & VE & SD
An ISO 9001:2008 Certified Institute



COURSES OFFERED

CIVIL ENGINEERING

MECHANICAL ENGINEERING

ELECTRICAL ENGINEERING

COMPUTER SCIENCE & TECHNOLOGY

ELECTRONICS & TELECOMMUNICATION ENGINEERING

 gsmpolytech@rediffmail.com

 www.gsmp.co.in



President's Message



There has been a great revolution in the world of technology and productivity, duly enhanced by the use of skilled manpower with technical competencies. India has one of the largest technical manpower in the world. However, compared to its population it is insignificant and there is a tremendous scope of improvement in this area. In India, the emphasis has been given on general education, with vocational education at the receiving end. This has resulted in a large number of educated people remaining unemployed. This phenomenon has now been recognized by the planners and hence there is a greater thrust on vocationalisation of education. Now, the number of graduate engineers as workforces are required at the lower level. Hence, more polytechnics and Institutes for Industrial Training (ITIs) are being opened now. Besides, various Ministries are trying to impart vocational course through innovative institutions, specially launched for that purpose. In doing so, the government is trying to maintain the quality of these courses. In recent years, vocational education has received a boost with more allocated funds for the purpose. Besides, it is also being ensured that the marginalized sections of the society, including women, must get adequate facilities from these courses. After matriculation or vocational qualification, technical system is the only gate-way to become an engineer.

Diploma is not only a technical / professional qualification to get a Job but gives an opportunity to higher education also. It can thus be hoped that Polytechnic system will play a vital role in improving the lives of the people of India.

Malay Pit

President, Gobindapur Sephali Samaj Seba Samity





SECRETARY'S MESSAGE

I, on behalf of **Gobindapur Sephali Samaj Seba Samity**, having a proven track record in the field of social welfare activities, establishment of educational institutions etc, would like to convey my best wishes to the students, guardians and well wishers who are related to our beloved endeavour- **Gobindapur Sephali Memorial Polytechnic**.

I hereby expect the heartiest co-operation from all the concerned, seeking innovative opinions to accelerate the speed of progress of this institution.

I welcome the aspirants and guardians who are interested in technical education to be a part of this Institution and expect the heartiest co-operation from all the concerned.

I wish the Endeavour with every success in the broader sense to technical education.

With Regards

Subhas Ghosh

Secretary, Gobindapur Sephali Samaj Seba Samity



PRINCIPAL'S MESSAGE

Welcome to **Gobindapur Sephali Memorial Polytechnic**, an Institution with a serene and conducive environment on overall academic performance and Personality Development.

A few months ago, I have assumed the charge of 'Principal' and since then I have put my best effort to orient myself with the Vision and Mission of **Gobindapur Sephali Samaj Seba Samity** and its Endeavour '**Gobindapur Sephali Memorial Polytechnic**'. I am very much proud to be associated with this concern as there is a positive environment for technical education along with moral and administrative support.

GSMP has been duly **approved by All India Council of Technical Education and affiliated to WBSCT & VE AND SD (WBSCTE)**. It has been introduced as a technical Institution of West Bengal within a very short time. **WBSCT & VE AND SD** has enlisted it as a centre for conducting **JEXPO & VOCLET** Examination. The students have secured more than **80% marks** (avg.) in all the Semester Examinations which is a matter of great pleasure for us. There is a good co-operation among all the dedicated faculty members, technical, supporting and administrative staffs that helps me to do the best for my beloved Institute. We are determined to provide all types of students-friendly arrangements for further orientation.

Jayanta Kumar Ray

Principal

Gobindapur Sephali Memorial Polytechnic

ABOUT US

The Institute campus has been setup at Gobindapur, Po.Keleti, Dist.- Purba Bardhaman just beside **NH-2B** (Burdwan/ Guskara to Bolpur- Santiniketan Road) in a beautiful and pollution free environment with well structured building, having all the facilities: **The well equipped library, laboratories, workshops and the hostels** have made it an ideal campus. It is only 5km. from Guskara and 18 km. from Bolpur (Shantiniketan) and well communicated by Bus route and Railway. Our sole aim is the improvement of our students and we have tried our level best to recruit experienced faculty members and staff.

OUR MISSION

- ❖ **To be recognized as the premier Technical Institute in the State West Bengal.**
- ❖ **To enable access to the best intellectual resources.**
- ❖ **To encourage facilities to develop academic research activities of common interest.**
- ❖ **To promote moral values, physical & mental fitness among the students, teachers, staff as a part of Human Resource Development.**

OUR VISION

- ❖ **To promote learning and development of human resources.**
- ❖ **To develop itself as a value added and need based quality education provider in West Bengal.**
- ❖ **To provide quality and competent professionals, responsive to the changing need of the society.**
- ❖ **To provide quality technical man-power to the industry of the country.**



CONTACT DETAILS OF THE INSTITUTE

Gobindapur Sephali Memorial Polytechnic

Gobindapur (Near Guskara), P.O:- Keleti, P.S:- Ausgram, Dist:- Purba Bardhaman

Pin: 713128, (West Bengal)

Contact No : 8373076099/ 8373076097/ 9732692824

Website : www.gsmp.co.in

Facebook : www.facebook.com/gsmp.guskara

Instagram : www.instagram.com/g.s.m._polytechnic

Twitter : www.twitter.com/MemorialSephali

E-mail : gsmpolytech@rediffmail.com

ROUTE DIRECTION

Bus Stoppage:- Gobindapur (Gupinpur), NH-2B (Purba Bardhaman Guskara to Bolpur)

Railway Station:- 5km. from Guskara Railway Station & 18 km. from Bolpur (Santiniketan) Railway Station.

Road:- 4 km. from Guskara Bus Stand & 20 km from Bolpur Bus Stand

Local Transport:- Public & Private Bus, Car etc. From Guskara and Bolpur



FACILITIES - AT A GLANCE



OBTAINABLE / ACCESSIBLE

- ❖ Spacious, Airy and large Class Rooms.
- ❖ Well accumulate Library and Reading Room.
- ❖ Special Remedial & Complimentary Tutorial classes including PDS from 6 p.m. to 10 p.m. (Compulsory for Hostellers & optional for Day scholars).
- ❖ Arrangement of coaching classes & orientation programme for higher education and.
- ❖ Placement Support for 2nd & 3rd year students.
- ❖ Well furnished Computer Lab with free Wi-Fi facility.
- ❖ Separate Laboratories for each Branch.
- ❖ Spacious workshops with good infrastructure.
- ❖ Well-equipped Gymnasium.
- ❖ Sports Corner, foot ball ground, volley ball court e.t.c.
- ❖ E-library (Pure drinking water)



SEPARATE HOSTEL FACILITIES FOR BOYS & GIRLS

Hostel Facilities both for boys and girls are available inside the campus at a very reasonable price, Hostels are well protected with regular supervision and emergency service along with generators facility.



TRANSPORTATION FACILITIES

Sufficient arrangement of transportation is also available from Burdwan, Guskara Railway station and Guskara Bus stand at a nominal charge. In case of medical/urgent requirement, transportation is available at any time.



PERSONALITY DEVELOPMENT

Students will be provided Personality Development Skill (PDS) Programs with -

- 1 Computer Learning.
- 2 Development of Communicative approach.
- 3 Development of Reasoning Abilities.
- 4 Scope of Extra Curricular Activities.
- 5 Mock Interviews.
- 6 Presentation Skill Development in English.
- 7 Group Discussion.
- 8 Communication & soft skill development.





SPECIAL TRAINING CLASS

Technical Education & Training, based on innovative technologies... bringing new hopes in Technical career development.

GOBINDAPUR SEPHALI MEMORIAL POLYTECHNIC, an institution recognized by All India Council of Technical Education Diploma courses. In addition to the physical infrastructural and instructional setups, several technology based initiatives are adopted to strengthen the academic environment here.

As **METVERSE** exploring a new horizon in web-technology, bringing new hope in skill & career development, the trainee students are provided amazing facilities to enhance their knowledge & skill through VR kits. Metaverse is now a new hope, a great excitement to merge the physical world with virtual experiences and it is being properly used in an effective mode for nursing education & training.

The Metaverse is the next iteration of the internet, supporting ongoing online 3D virtual environments where the world's publicly accessible virtual experiences, real-time 3D contents and other related media are connected and accessible through VR/AR, as well as through classic devices such as PC or mobile.

An immersive Web3 internet, where users meet in virtual spaces, represent themselves as avatars and share virtual objects through new technologies appropriate to the medical, nursing and health care sectors. In the near future, we will have a digital layer of our everyday life a virtual presence of ourselves will perform all the activities we typically do, within a Real-World Metaverse fueled by real-time data.

We will live a whole existence in virtual environments, where we will be represented by our Human Digital Twins. The conceptual clarity & its digital application may bring a revolution in education, research healthcare & placement sectors in short future.

We being the dedicated entrepreneurs in such fields welcome you towards a co-ordination & sustainable development for mankind in nursing education. We have a promising attitude to promote skill development by providing sufficient scopes of exploration & elaboration relating acquisition of knowledge in nursing education. The trainees/ students are being provided classroom, laboratories & job experiences virtually in advance. Thus job readiness will be comparatively better always in respect to others.

The concept of virtual reality like metaverse will be a real-like artificial universe which will certainly bring a revolution in technical, medical, nursing and health care sector. Let's have your heartiest & dedicated involvement, sagacious suggestions for a better existence of technical education. Training as well as healthcare sector.



COURSE OFFERED

The institute offers 3 years full time Diploma in Engineering Courses in:

TOTAL INTAKE

 CIVIL ENGINEERING	180	 MECHANICAL ENGINEERING	120
 ELECTRICAL ENGINEERING	60	 ELECTRONICS & TELE-COMMUNICATION ENGG.	30
 COMPUTER SCIENCE & TECHNOLOGY	30		



ELIGIBILITY & ADMISSION PROCEDURE

THE APPLICANTS SHOULD BE QUALIFIED IN:

JEXPO- (75% of intake capacity in each discipline with a valid rank and allotment)

FOR DIRECT ADMISSION (25% OF INTAKE CAPACITY IN EACH DISCIPLINE)








(Under Management Quota): Madhyamik /Equiv. Passed with specification if Any per WBSCTE & VE & SD norms with 35% marks.

ADMISSION TO 2nd YEAR ON THE BASIS OF "LATERAL ENTRY SCHEME:

Up to 10% of the sanctioned intake, of students passed 10+2 with Vocational or 10+2 Science / or Bioscience background will be directly admitted in second year through Counselling to be conducted by WBSCT & VE & SD followed by VOCLET Exam / ITI 2 years course with NCVT approved certificate.



TERMS & CONDITIONS

-  Payment of fees should be made within due date as mentioned. Refundable at as per college authorities decision.
-  All Candidates must abide by the code of conduct, rules & regulations came in force from time to time.
-  75% class attendance is must to be allowed to attend the semester examinations, to be conducted by WBSCT & VE & SD.
-  Any kind of Academic dishonesty, misconduct, indiscipline, violence or damage of the property of the Institute, will be treated as an offence against the Institute and such students will be debarred from further studies at GSMP
-  Students will have to pay semester fees even in case of discontinuation of the courses.
-  Uniform is mandatory and a part of the Institute's discipline.
-  Students and guardians must submit Affidavit regarding the awareness of law and undertaking the punishment of ragging.

The Institute reserves the right to amend the rules if necessary:



CODE OF CONDUCT FOR THE STUDENTS



- ▶ Student enrolled at GSMP must recognize their responsibilities to this Institute, Teacher's, staff and to keep up the reputation of the Institution.
- ▶ Regular attendance is essential except in the case of emergency. Students must wear uniform inside the campus the Institute-authority can expel him/her, if he /she is proved to be responsible for curbing ragging at any respect.
- ▶ Possession and / or the use of intoxicating beverage, possession of illicit drug, and possession of weapons are strictly banned inside the campus
- ▶ Falsification of documents or the supply of false information in order to obtain admission etc. will attract disciplinary action.



IMPORTANT DOCUMENTS



1. 10th pass Admit, Marksheet, Certificate.
2. Caste Certificate.
3. Recent Passport Size Colour Photo 4 Copies.
4. Aadhaar Card.
5. Rank Card / Allotment Letter of JEXPO/VOCLET Counselling.
6. 10+2 Vocational/ ITI / H.S Admit, Marksheet, Certificate (For VOCLET Admission)

*** Candidates must bring the above document in original for verification at the time of Admission.**

FEES STRUCTURE FOR DIRECT & JEXPO, SESSION

FEES HEAD	1 st SEMESTER		2 nd SEMESTER		3 rd SEMESTER		4 th SEMESTER		5 th SEMESTER		6 th SEMESTER	
	DIRECT	JEXPO	DIRECT	JEXPO	DIRECT	JEXPO	DIRECT	JEXPO	DIRECT	JEXPO	DIRECT	JEXPO
Form and Prospectus	2000	2000										
Admission Fees	6000	6000										
Co-Curricular Games Activities	3000	3000										
Student Welfare	3000	3000										
Emergency Charges	3000	3000										
Tuition Fees	15000	9000	15000	9000	15000	9000	15000	9000	15000	9000	15000	9000
Development Fees	3000	3000	3000	3000	3000	3000	3000	3000	3000	3000	3000	3000
PDS	3000	3000	3000	3000	3000	3000	3000	3000	3000	3000	3000	3000
Misc.	3000	3000	3000	3000	3000	3000	3000	3000	3000	3000	3000	3000
Total	41000	35000	24000	18000	24000	18000	24000	18000	24000	18000	24000	18000

Annual Occasion Fees 6000/- for 3 years (Observation of Special days Viswakarma Puja, Campus Interview, Job Fair, Freshers Welcome, Annual Cultural Programme, Fairwel etc.)

PAYMENT OF SEMESTER/TUITION FEE THROUGH BANK DEPOSIT

BANK OF BARODA

A/C NAME : GOBINDAPUR SEPHALI MEMORIAL POLYTECHNIC

A/C NO. : 38670100000417

BRANCH : GUSKARA, IFSC CODE - BARBOGUSKAR

A/C TYPE : S/B



बैंक ऑफ़ बड़ौदा
Bank of Baroda



बैंक ऑफ़ बड़ौदा
Bank of Baroda

PAYMENT OF HOSTEL FEES :- (THROUGH BANK DEPOSIT)

A/C NAME : GOBINDAPUR SEPHALI SAMAJ SEBA SAMITY

BANK NAME : BANK OF BARODA

A/C NO. : 38670100001920

BRANCH : GUSKARA, IFSC CODE - BARBOGUSKAR



बैंक ऑफ़ बड़ौदा
Bank of Baroda



बैंक ऑफ़ बड़ौदा
Bank of Baroda

HOSTEL ADMISSION FEES 5000/- & MONTHLY FEES : 3500/-

After Payment bank-receipt must be verified/submitted at office.

ABOUT COURSES

CIVIL ENGINEERING

Civil and Environmental engineers are the engineers who help the society to function. In this broad Historical context, civil engineer's plan, design, construct, maintain and improve structures, facilities, and other infrastructure, including transportation and energy systems, with the goal of wise and efficient use of resources. In similar historical context, environmental engineers work on the methods to protect human health and the environment, including the provision of safe and adequate water supplies, understanding the contaminant behaviour in engineered and natural systems and minimizing human beings impact on the planet's systems and cycles on which all life depends. Today, at the beginning of the 21st Century, it is evident that the practice of civil and environmental engineering has changed in many ways during the past several decades. Never the less, our social contract has not changed. We still create, manage, maintain, & renew the society's infrastructure in a way that provide an appropriate quality of life for all, but that also protect, nurture or renew our fragile environment and nature's resources. However, a significant change from the past several decades is that our social contract, now, must address a common goal of engineering for a sustainable future. The biggest opportunity, we face in addressing this challenge is to more fully merge the disciplines of Civil Engineering and Environmental Engineering with the objectives of making all of us 'Sustainable Civil Engineers.

FACULTY DETAILS

NAME	QUALIFICATION	DESIGNATION
AMIT MONDAL	B.TECH	HOD
DIPANKAR KARMOKAR	B.TECH	LECTURER
ANIMESH RAY	B.TECH	LECTURER
SUBHADIP BIR	B.TECH	LECTURER
SK SOYEP ALI	B.TECH	LECTURER
CHITRALEKHA BERA	B.TECH	LECTURER
BIKI SHOW	B.TECH	LECTURER
DIPAN DAS	B.TECH	LECTURER

NAME	QUALIFICATION	DESIGNATION
ARINDAM CHAKRABORTTY	B.TECH	LECTURER
KISHOR MONDAL	B.TECH	LECTURER
RUPAM GHOSH	B.TECH	LECTURER
BISWAJIT GHOSH	B.TECH	LECTURER
MANOSHI BASUNIA	B.TECH	LECTURER
ANAGH BHATTACHARYA	B.TECH	LECTURER
AYAN GANGULY	B.TECH	LECTURER
TANUSREE PARIA	B.TECH	LECTURER



gsmpehod@gmail.com



(+91) 7719378721

MECHANICAL ENGINEERING

Mechanical engineering is a diverse subject that derives its breath from the need to design and manufacture everything from small individual parts and devices (e.g microscale sensors and ink-jet printer nozzles) to large system (e.g spacecraft and machine tools).The role of the Mechanical Engineer is to take a product from an idea to the market place in order to accomplish.

There, a broad range of skills are needed. The **Mechanical Engineer** needs to acquire particular skills and knowledge. He / she needs to understand the forces and the thermal environment that a product, its parts or the sub systems will encounter to design them for functionality, aesthetics and the ability to withstand the forces and the thermal environment. They will be subjected to and to determine the best way to manufacture them and to ensure that they will operate without failure perhaps the one skill that is the Mechanical Engineer's exclusive domain is the ability to analyze and design objects and systems with motion.



FACULTY DETAILS

NAME	QUALIFICATION	DESIGNATION
SUPRIYA GHOSH	M.TECH	HOD
RATUL BHATTACHARYA	B.TECH	LECTURER
SK JAHIRUL ISLAM	DIPLOMA	LAB INSTRUCTOR
RAJAT SUBHRA BAIN	B.TECH	LECTURER
KAMAL HOSSAIN MOLLA	B.TECH	LECTURER
SIRAJ KHAN	M.TECH	LECTURER

NAME	QUALIFICATION	DESIGNATION
DEBOJYOTI CHOUDHURY	B.TECH	LECTURER
SUVENJIT BHATTACHARYA	B.TECH	LECTURER
SHUBHASHIS DAS	B.TECH	LECTURER
SUPRIYO DEY	B.TECH	LECTURER
KONIZ JOYNAB	M.TECH	LECTURER
BRISAKETU BERA	B.TECH	LECTURER



 gsmp.me2016@gmail.com

 (+91) 8373076101

ELECTRICAL ENGINEERING

Electrical Engineering is the branch of Engineering which deals with the study of the application of electricity, electronics and electromagnetism. Trained electrical engineers design electric circuits and equipment. They work on large power plants as well as in small hardware companies which include designing, manufacturing and operating power plants, industrial machinery, electrical motors, computer chips and ignition systems for automobiles, aircrafts, space crafts and all kinds of engines.

Electrical Engineering is spread across a range of specialties such as acoustics, speech, signal processing to electromagnetic compatibility, automobiles to vehicular technology, geo-science and remote sensing, laser and electro-optics, robotics, ultra-sonic, ferroelectrics and frequency control.

A qualified electrical engineer has the option to choose his/her line of work from a range of areas like computers, cell phone, electronic gadgets, radars, navigation systems, power plant, etc.

FACULTY DETAILS

NAME	QUALIFICATION	DESIGNATION
ARIJIT MONDAL	B.TECH	HOD
BOSIRUL ISLAM	B.TECH	LECTURER
KAMIRUL KHAN	B.TECH	LAB ASSISTANT
AYAN PAL	B.TECH	LECTURER
SANJOY GHOSH	B.TECH	LECTURER

NAME	QUALIFICATION	DESIGNATION
JAYITA ADHIKARI	B.TECH	LECTURER
SADBHABANA GHOSH	B.TECH	LECTURER
SUBINYOY CHOUDHURY	B.TECH	LECTURER
SUMIT MAZUMDER	B.TECH	LECTURER



 gsmpee@gmail.com

 (+91) 8373076094

COMPUTER SCIENCE AND TECHNOLOGY



“Computer science is the operating system for all innovation”

~~ Steve Ballmer (Former CEO, MICROSOFT)

The digital era is here, with its omnipresence in all aspects of life, rendering us with efficiency, productivity, usability, presentation and many more. Needless to say, the role of computers is thriving exponentially and has gradually become an irreplaceable part of our lives globally. This justifies the need of more and more efficient and competent computer engineers worldwide.

The primary objective of the Department of Computer Science and Technology is to offer an environment that encourages one potential academic programmes. Within the ambit of IT Industry, the department shall endeavour to develop newer problem – solving methods and apply these to creative design scenarios in contemporary and emerging technologies. With a high degree of conceptual information and real time implementations, the Department has a good record of placing aspiring software engineers in the software industry.



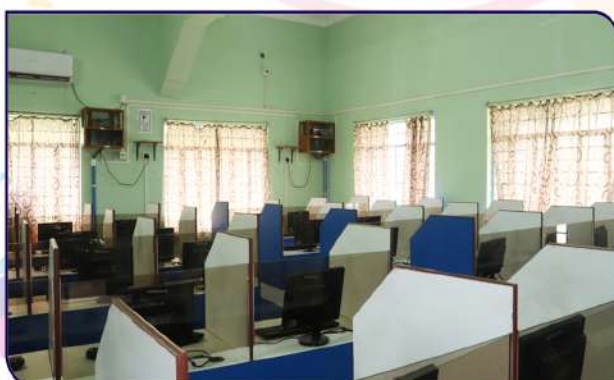
The course under Diploma in Computer Science and Technology equips the students to work in various domains of engineering such as design, development, testing and maintenance. After its introduction in 2010, the Department has grown in leaps and bounds in terms of the student intake, placement statistics and deliverance of industry-based education and cutting-edge research development.

FACULTY DETAILS



NAME	QUALIFICATION	DESIGNATION
SAYAN KUMAR KHAN	B.TECH	HOD
SWADHIN MONDAL	B.TECH	LECTURER
ACHINTYA GHOSH	NETWORK ADMIN	LAB INSTRUCTOR
BIRAJ SINGHA	B.TECH	LECTURER

NAME	QUALIFICATION	DESIGNATION
SK MD WASIM	B.TECH	LECTURER
NIRMALYA BASU	B.TECH	LECTURER
ANANYA GHOSH	B.TECH	LECTURER



 csthod@gmail.com

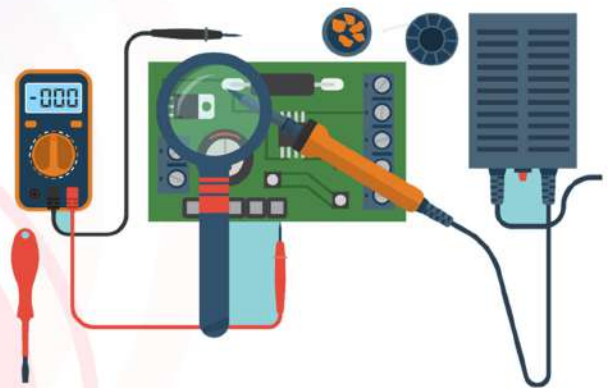
 (+91) 8373076100

ELECTRONICS AND TELE-COMMUNICATION ENGINEERING

The students in the electronics engineering program receive a strong foundation in engineering science and design that will enable them to pursue productive careers in not only the electronics engineering field, but can also be used as the foundation for careers in other areas such as business, management, and medicine. Typical industries, in which the electronics engineering would be employed, could include those in communication systems, telecommunication networks, analog systems, and hardware/software integration, and digital and microprocessor systems.

FACULTY DETAILS

NAME	QUALIFICATION	DESIGNATION
JAYANTA KUMAR RAY	M.TECH, PhD PURSUING	PRINCIPAL
BISWARUP SANTRA	M.TECH	HOD
SUBHA GHOSH	B.TECH	LECTURER
KRISHNENDU KARMAKAR	M.TECH	LECTURER
SUBRATA MONDAL	M.TECH	LECTURER
RUMELI BANERJEE	B.TECH	LAB INSTRUCTOR



 etc.gsm@gmail.com

 (+91) 7548975536

ANTI-RAGGING CELL

With reference to notification by the Govt. of West Bengal, Directorate of Technical Education- "Ragging in Educational Institutions, at any form, is prohibited by law and if anyone is found to be guilty of Ragging, he/she will liable to be punished under the provisions of Section - 4, 5 & 6 of West Bengal Prohibition of Ragging in Educational Institutional Act 2000 (WB Act XII of 2000)". An anti-ragging Cell has been setup in our Institution to prevent any kind of Ragging strictly. This cell is constituted with management, Principal, Faculty members, Govt. Officials & Student representatives. The anti-ragging cell is very strong and active against any types of ragging since its establishment. As a result, GSMP has introduced itself as a ragging-Free Campus Now.



It Co-ordinates to monitor the activities of anti-ragging committee, Squad and monitoring cell ragging compliance with the instructions on conducting orientation programmes counseling session etc. and ragging, the incident of ragging, the problem faced by the warden and other officials. It reviews on considering the **AICTE** guidance and as per order of the Hon'ble supreme court to publicize anti- Monitoring mechanism in anti-ragging cell at GSMP.

Anti-Ragging Committee

It has been duly constituted, being headed by the principal along with active representation of civil and Police Administration, Local Media, Non-Govt. Organization, Faculty Members, Parents, Students and Non Teaching Staff. The committee is responsible to ensure compliance of law concerning ragging.

Anti-Ragging Squad

We have a strong squad nominated by the Principal with dedicated representation of various members of the campus community to maintain vigil. Oversight and patrolling functions and shall remain mobile, alert and active at all times.

RAGGING IS A CRIMINAL OFFENCE

As per anti ragging laws, student is found guilty of the offence of ragging and/or abetting ragging is liable to be punished. Any aggrieved person should immediately communicate with the following members of the Anti Ragging committee for redressal. Any scent or indication of probable ragging also should be immediately intimated you to any of the persons mentioned below.

📞 9732692824

📞 7719378721

📞 8373076101

📞 8373076094

📞 7548975536

📞 8383076100

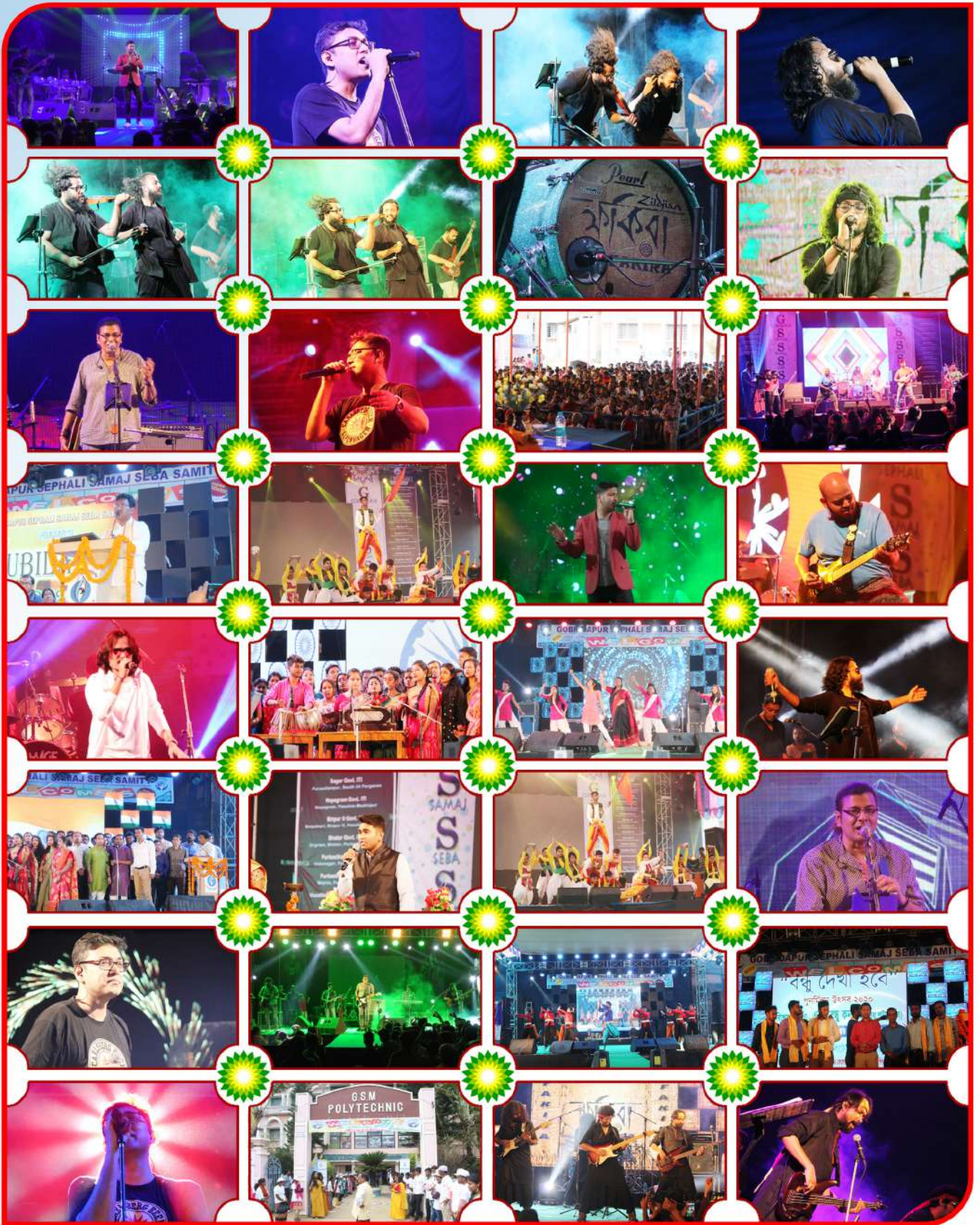
📞 8373076104

Our Culture... Our Identity

Culture is the lifeblood of a vibrant society, expressed in the many ways to tell our stories, celebrate, remember the past, entertain ourselves, and Imagine the future. Our creative expression helps to define who we are, and helps us to see the world through the eyes of others. Our students participated in many cultural events in many ways—as audiences, professionals, amateurs, volunteers.

In addition to its intrinsic value, culture provides important social and economic benefits. With improved learning and health, increased tolerance, and opportunities to come together with others, culture enhances power, quality of life and increases overall well-being for both individuals and communities.







FROM THE DESK OF TPO



'Training and placement Cell' is the most important organ of the Institution and I feel proud to dedicate myself as I am assigning not only to the academic activities but also to some additional responsibilities. The management is striving hard for making placement for the outgoing students by arranging campus interviews, Job fairs, Central Campusing etc. This cell offers expert guidance and support in soft skills, personality development, group discussion etc. T & P cell, guided by the advisory Committee, is always at the service for students for their carrier-development.

I would like to have sagacious advices and co-operations from all concerned to make our mission successful.



TRAINING AND PLACEMENT



Training and placement cell of this institution is the most important cell here. This cell is headed by the TPO, HOD are the members. This cell plans for proper implementation of effective guidance counseling to the students and conducts on / off campusing for students' placement in different concerns. It is also involved to communicate the dignitaries of various companies to share the views and experiences with the students, as well as it makes a smooth Institute-Industry Relationship for better placement of students.



A ADVISORY COMMITTEE



**DIGNITARIES FROM
PERSONALITIES OF ACADEMIC & INDUSTRIAL EXCELLENCE.
EXPERIENCED TEACHERS.
DIRECTORS.**



ADVISORY COMMITTEE



To guide the TPC and to prepare the blue print of the task assigned to it.

To select Experts for special training.

To represent in seminars, workshop orientation programmes for teachers & students.

To evaluate the performance of TPC and to Provide remedial advice to TPC.

To organize special industry oriented course/training.





B TRAINING & PLACEMENT CELL



- ▶ **Principal/ Director.**
- ▶ **Training & placement officer.**
- ▶ **HOD supporting staff**



ACTIVITIES



- **To Prepare Student's data-sheet along with comprehensive and continuous evaluations.**
- **To arrange academic programmes, industrial training, project for the students.**
- **To communicate with the different industries. To conduct several career guidance programme.**
- **To conduct seminars/ Workshops by dignitaries for proper grooming of the students.**
- **To make the students industry wise ready.**
- **To conduct aptitude test, group discussion, mock interviews, brain storming session, reasoning test, effective measures to promote communication among the students.**
- **To conduct HRD training programmes.**
- **To organize campus recruitment programmes, job fair etc. To collect detailed informations of different industries.**
- **To conduct regular industry visits.**
- **To arrange guest Lectures for updated information or to arrange the academic process industrial training market & industry.**
- **To provide counseling for higher studies.**
- **To motivate the students towards entrepreneurship development.**
- **To provide classroom /postal / online / coaching for different Competitive exams In PWD, CPWD, RAILWAY, SSC, PSC, ONGC IRRIGATION & OTHER Govt. / undertaking/ Non Govt. Sectors.**
- **To follow advertisement for off Campusing and to visit websites of job Fair producers on regular basis.**



TRAINING & PLACEMENT OFFICER

Emil ID : tpogsmp@gmail.com

Contact No. : (+91) 8001191742

OUR STUDENTS ARE AVAILED THE SCOPE FOR INDUSTRIAL TRAINING AT

1. The Durgapur Projects Limited (DPL):
2. West Bengal Power Development Corporation (WBPDCL):
3. Public Works Department.(PWD):
4. Eastern Railway (ER):
5. Durgapur Steel Plant (DSP):
6. Simplex Infrastructures Ltd:
7. Damodar Valley Corporation (DVC):
8. National Power Training Institute (NPTI)
9. WEBEL IT Park:
10. Jay Bharat Maruti Ltd. (JBM):
11. L&T Construction Skill Training Institute (CSTI):
12. Maruti India:
13. RL Infocomm Pvt Ltd



OUR RECRUITERS AT A GLANCE



CONTACT DETAILS

NAME	E-MAIL	CONTACT NO.
Office & Scholarship Cell	gsmpolytech@rediffmail.com	(+91) 9732692824
Admission Cell	admissioncellgsm@gmail.com	(+91) 8373076097,8373076099
Principal	gsmpolytech@rediffmail.com	(+91) 9433132839
Teacher-in-charge	oicgmp@gmail.com	(+91) 9732794065
Training & Placement Officer	tpogsm@gmail.com	(+91) 8001191742
Hostel In Charge	gsmpolytech@rediffmail.com	(+91) 6295781290
H.O.D : Civil	gsmpehod@gmail.com	(+91) 7719378721
H.O.D : Mechanical	gsmpe.me2016@gmail.com	(+91) 8373076101
H.O.D : Electrical	gsmpee@gmail.com	(+91) 8373076094
H.O.D : E.T.C	etc.gsm@gmail.com	(+91) 7548975536
H.O.D : C.S.T	csthod@gmail.com	(+91) 8373076100
H.O.D : B.S.H	gsmpe.bsh@gmail.com	(+91) 8373076104
Accounts Section	gsmpeaccstud21@gmail.com	(+91) 9732304861

OTHER INSTITUTIONS ENDEAVOURED BY



GOBINDAPUR SEPHALI SAMAJ SEBA SAMITY



COLLEGE NAME & CONTACT NUMBER

DINABANDHU B.ED COLLEGE	PH. NO : 8001191741	PATHARPRATIMA GOVT. I.T.I (PPP)	PH. NO : 7479044738
SEPHALI MEMORIAL PRIVATE I.T.I	PH. NO : 7719378715	NAYAGRAM GOVT. I.T.I (PPP)	PH. NO : 7479044732
GOBINDAPUR SEPHALI MEMORIAL P.T.T.I	PH. NO : 8001191740	BINPUR - II GOVT. I.T.I (PPP)	PH. NO : 7479044736
SEPHALI MEMORIAL PUBLIC SCHOOL	PH. NO : 8001192270	PURBASTHALI - I GOVT. I.T.I (PPP)	PH. NO : 7479044735
SEPHALI MEMORIAL NURSING INSTITUTE	PH. NO : 8373076105	PURBASTHALI - II GOVT. I.T.I (PPP)	PH. NO : 7479044736
BHATAR GOVT. I.T.I (PPP)	PH. NO : 7479044733	SAGAR GOVT. I.T.I (PPP)	PH. NO : 7479044737
		ECL SEPHALI PVT. I.T.I	PH. NO : 6296901175



OUR PORTALS

JOB PORTAL : www.theseba.in

TELEMEDICINE PORTAL : www.edocsmc.in

ADMISSION PORTAL : www.gowithadmission.in

DIGITAL MARKET PORTAL : www.sdmarket.in

ENTREPRENEURSHIP PORTAL : www.kormoshri.in

OUR ENDEAVOURS



**DEEPSIKHA NURSING
INSTITUTE**



**BIRBHUM NURSING
INSTITUTE**



**GLORIOUS INSTITUTE OF
NURSING**



BINPUR II GOVT ITI

www.binpurigoviti.in



**DINABANDHU B.ED
COLLEGE**

www.dinabandhubed.com



NS B.ED COLLEGE

www.nsbed.com



**GOBINDAPUR SEPHALI
MEMORIAL POLYTECHNIC
COLLEGE**

www.gsmp.co.in



**NS POLYTECHNIC
COLLEGE**

www.nspc.co.in



**N.S. TEACHERS TRAINING
COLLEGE**

www.nsttcollege.com



**GOBINDAPUR SEPHALI
MEMORIAL P.T.T.I**

www.gsmppti.com



**SEPHALI MEMORIAL
PUBLIC SCHOOL**

www.smpschoool.co.in



**HATE KALAME SHIKSHA
KENDRA**

www.hskk.co.in



SAGAR GOVT. ITI

www.sagargoviti.in



**ECL SEPHALI PRIVATE
ITI**

www.eclspiti.com



**SEPHALI MEMORIAL
PRIVATE ITI**

www.sephalimemorialprivateiti.in



NAYAGRAM GOVT. ITI

www.nayagramgoviti.in

OUR ENDEAVOURS



**SANTINIKETAN
MEDICAL COLLEGE**

www.smcbangla.com



**SANTINIKETAN INSTITUTE
OF POLYTECHNIC**

www.santiniketanpolytechnic.org



**SANTINIKETAN
PARAMEDICAL COLLEGE**

www.spcbengal.in



**SANTINIKETAN SEBANIKETAN
NURSING INSTITUTE**

www.ssns.org.in



**SANTINIKETAN INSTITUTE
OF ALLIED HEALTH SCIENCE**

www.siahs.in



SANTINIKETAN PRIVATE ITI

www.santiniketaniti.com



**SWADHIN
TRIPURA PRIVATE ITI**

www.tripuraiti.com



**SWADHIN
PORTBLAIR PRIVATE ITI**

www.swadhinportblairprivateiti.com



**ILLAMBAZAR
GOVERNMENT ITI**

www.illambazargovernmentiti.com



**DUBRAJPUR
GOVERNMENT ITI**

www.dubrajpurgovernmentiti.com



**KHOYRASOLE
GOVERNMENT ITI**

www.khoyrasolegovernmentiti.com



**TEHATTA
GOVERNMENT ITI**

www.tehattagovernmentiti.com



**NAKASHIPARA
GOVERNMENT ITI**

www.nakashiparagovernmentiti.com



**KALIGUNJ
GOVERNMENT ITI**

www.kaligunjgovernmentiti.com



PURBASTHALI II GOVT. ITI

www.purbasthali2goviti.in

OUR ENDEAVOURS



**MANBAZAR
GOVERNMENT ITI**

www.manbazargovernmentiti.com



**KHATRA
GOVERNMENT ITI**

www.khatragovernmentiti.com



**DINHATA
GOVERNMENT ITI**

www.dinhatgovernmentiti.com



**MATHABHANGA
GOVERNMENT ITI**

www.mathabhangagovernmentiti.com



**SANTINIKETAN
B.ED. COLLEGE**

www.santiniketanbedcollege.com



**SANTINIKETAN
D.ED. COLLEGE**

www.santiniketandedcollege.com



Health
care



**EDOCSMC
(TELEMEDICINE SERVICE)**

www.edocsmc.in



**SANTINIKETAN DIGITAL
RESEARCH CENTER**

www.onlinesdrc.in



NS PRIVATE ITI

www.nsprivateiti.in



DOKRA

www.craftcommunity.in



**FASION
ACCESSORIES CLUSTER
(APPAREL MANUFACTURING UNIT)**

www.amarsantiniketan.com



**SANTINIKETAN
SEBANIKETAN NURSING HOME**

www.santiniketansebaniketan.com



BHATAR GOVT. ITI

www.bhatargoviti.in



**AMADER SANTINIKETAN
(GUEST HOUSE)**

www.amadersantiniketan.com



PURBASTHALI I GOVT. ITI

www.purbasthali1goviti.in

OUR ENDEAVOURS



**SWADHIN NURSING
INSTITUTE**

www.ssnursing.co.in



**SANTINIKETAN DIGITAL
MARKET**

www.sdmarket.in



**SANTINIKETAN INSTITUTE
OF
ALLIED HEALTH SCIENCES**

www.slash.in



**SANTINIKETAN COLLEGE
OF EDUCATION**

www.santiniketancollegeofeducation.com



**MODEL EDUCATION
COLLEGE**

www.modeeducationcollege.com



**KABIGURU NURSING
INSTITUTE**

www.kabigurunursing.in



**DSMS INSTITUTE OF
NURSING**

www.ssnursing.co.in



**SANTINIKETAN NURSING
INSTITUTE**

www.santiniketannursing.in



**SEPHALI MEMORIAL
NURSING INSTITUTE**

www.sephalinursing.in



**SAMAJKALYAN NURSING
INSTITUTE**

www.samajkalyannursing.in



**SAINTHIA NURSING
INSTITUTE**

www.sainthianursing.in



**ILLAMBAZAR NURSING
INSTITUTE**

www.illambazarnursing.in



**RAMPURHAT NURSING
INSTITUTE**

www.rampurhatnursing.in



**NSMS NURSING
INSTITUTE**

www.nsmsnursing.in



**PATHARPATIMA GOVT
ITI**

www.patharpotimagoviti.in

E-library



GOBINDAPUR SEPHALI MEMORIAL POLYTECHNIC

A Unit of Gobindapur Seshali Samaj Seba Samity

Approved by AICTE & Affiliated to WBSCT & VE & SD
(An ISO 9001:2008 Certified Institute)

 gsmpolytech@rediffmail.com

 www.gsmp.co.in

GOBINDAPUR (NEAR GUSKARA), KELETI, AUSGRAM, PURBA BARDHAMAN, WB-713128